

Specifications

Product Type: Cannabis All-In-One

Dimension: 119.0*24.1*12.5mm (2.0ml)

108.2*24.1*12.5mm (0.5ml/1.0ml)

Tank Capacity: 0.5ml/1.0ml/2.0ml

Battery Capacity: 380mAh

Tank Material: PCTG

Mouthpiece Material: PCTG

Shell Material: PCTG + Aluminum Alloy

Heating Element: Ceramic Coil

Central Post: Postless

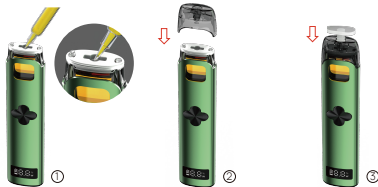
Output: 2.8W-7.2W (Adjustable)

Charging Port: Type-C

Preheating Time: 5 Seconds

Draw Mode: Autodraw (unlock button first)

Filling Instructions



- ① Fill the oil into the central filling hole (make sure the oil does not exceed the chamber's capacity).
- ② Attach the mouthpiece to the oil chamber from the top down.
- ③ Secure the silicone plug on the mouthpiece.

Note:

- Do not fill oil into the two side airpaths.
- Use an injection needle with a diameter no greater than 2.5mm.
- Clean any oil drips immediately to prevent mess.
- Attach the mouthpiece within 30 seconds or as quickly as possible after filling to avoid leaking or clogging.
- Ensure the mouthpiece is securely attached with no visible gaps.



Novo Ultra User Manual

Function Instructions






Power On/Off:
Click x 5






Preheat: Click x 2
(after powering on)



Wattage Adjustment:
Click x 1 ($\pm 0.2W$)

-  Green = Low (2.8W-3.6W)
-  Blue = Medium (3.8W-5.0W)
-  Red = High (5.2W-7.2W)

1. Power On/Off: Click the button  5 times rapidly to turn on/off.
2. Preheat Mode: 2 clicks  to start a 5-second preheat. The light will gradually change from red to green to blue.
3. Power Adjustment: Press  the + / - buttons to regulate the output wattage.

Note:

- The device will automatically shut off after 45 minutes of inactivity.
- Preheating will stop if any operation is performed or the device is charged.

Display Instructions

Power Level  Voltage
Battery Status  Wattage



Charging Instructions

① During Charging

The display screen remains on and the battery icon flashes.



② Charging Complete

The display screen turns off once charging is complete.

When the power cable is removed, the screen flashes 3 times.

WARNING

1. The battery icon flashes red 10 times needs to be charged.
2. Insufficient battery level or voltage may lead to suboptimal performance. Please recharge the device promptly.
3. Use the original charging cable. Avoid fast chargers or adapters over 5 Volts/2 Amps.
4. Don't leave the device unattended while charging. Do not use the device while charging.
5. Keep the device at close to room temperature. Avoid extreme heat or cold (extreme heat may cause explosions). Store away from direct sunlight for long periods.
6. Do not use if the device is damaged, wet, or has been dropped. Do not disassemble or modify it.