

Specifications

Product Type: Cannabis All-In-One

Dimension: 117.0*24.1*12.4mm (2.0mL)

106.3.2*24.1*12.4mm (0.5mL/1.0mL)

Tank Capacity: 0.5mL/1.0mL/2.0mL

Battery Capacity: 380mAh

Mouthpiece Material: PCTG

Shell Material: PCTG + Aluminum Alloy

Heating Element: Ceramic Coil

Central Post: Postless

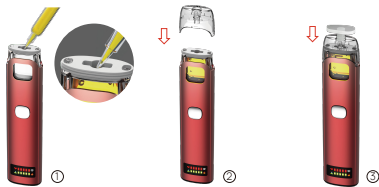
Output: Variable Voltage

Charging Port: Type-C

Preheat Time: 5 Seconds

Draw Mode: Autodraw (unlock button first)

Filling Instructions



- ① Fill the oil into the central filling hole (make sure the oil does not exceed the chamber's capacity).
- ② Attach the mouthpiece to the oil chamber from the top down.
- ③ Secure the silicone plug on the mouthpiece.

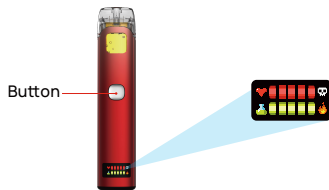
Note:

- Do not fill oil into the two side airpaths.
- Use an injection needle with a diameter no greater than 2.5MM.
- Clean any oil drips immediately to prevent mess.
- Attach the mouthpiece within 30 seconds or as quickly as possible after filling to avoid leaking or clogging.
- Ensure the mouthpiece is securely attached with no visible gaps.



Novo Play User Manual

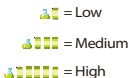
Function Instructions



Power On/Off: Clickx5

Preheat: Clickx2

Voltage Adjustment: Clickx3



1. Power On/Off: Click the button 5 times rapidly to turn on/off.
2. Preheat Mode: 2 clicks rapidly to start a 5-second preheat. During preheating, the green potion icon stays solid, the green squares display a running marquee effect, and the flame icon flashes.
3. Voltage Adjustment: Click the button 3 times rapidly to switch voltage levels.

Notes:

- The device will automatically shut off after 60 minutes of inactivity.
- Preheating will stop if any operation is performed or the device is charged.

Display Instructions



Charging Instructions

① During Charging

The display screen remains on, and  flashes, and  shows a running marquee effect.



② Charging Complete

The display screen turns off once charging is complete. When the power cable is removed, the screen flashes 3 or 4 times (depending on the version).

WARNING

1. The battery icon flashes red 10 times needs to be charged.
2. Insufficient battery level or voltage may lead to suboptimal performance. Please recharge the device promptly.
3. Use the original charging cable. Avoid fast chargers or adapters over 5 Volts/2 Amps.
4. Don't leave the device unattended while charging. Do not use the device while charging.
5. Keep the device at close to room temperature. Avoid extreme heat or cold (extreme heat may cause explosions). Store away from direct sunlight for long periods.
6. Do not use if the device is damaged, wet, or has been dropped. Do not disassemble or modify it.