

Specifications

Product Type: Cannabis All-In-One

Dimension: 71.9*43.0*18.5mm

Tank Capacity: 2mL

Battery Capacity: 350mAh

Tank Material: PCTG

Heating Element: Dual Ceramic Coil

Central Post: Postless

Voltage: Variable Voltage

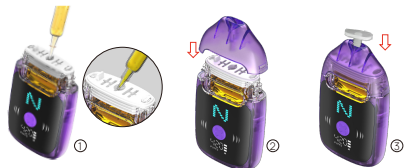
Charging Port: Type-C

Preheating Time: 5 Seconds

Protection Switch: 60-Min Auto-Shut-Off

Draw Mode: Autodraw (unlock button first)

Filling Instructions



- ① Fill the oil into the central filling hole (make sure the oil does not exceed the chamber's capacity).
- ② Attach the mouthpiece to the oil chamber from the top down.
- ③ Secure the silicone plug on the mouthpiece.

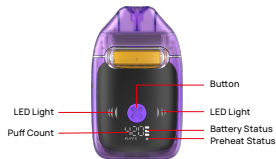
Note:

- Do not fill oil into the air paths on both sides.
- Use an injection needle with a diameter no greater than 2.5mm.
- Clean any oil drips immediately to prevent mess.
- Attach the mouthpiece within 30 seconds or as quickly as possible after filling to avoid leaking or clogging.
- Ensure the mouthpiece is securely attached with no visible gaps.



Cobra Fusion User Manual

Function Instructions



Power On/Off: Click × 5

Preheat: Click × 2

Puff Counter Reset: Click ≥ 10

Voltage Adjustment: Click × 3



Green = Low



Blue = Medium



Red = High

1. Power On/Off: Click the button 5 times rapidly to turn on/off.
2. Preheat Mode: Double-click (2x) to start a 5-second preheat. The light will flash during heating.
3. Power Adjustment: Triple-click (3x) to switch power levels (Green = Low, Blue = Medium, Red = High).
4. Puff Counter Reset: Click ten times (10x) or more to reset the puff counter to zero.

Note:

- The device will automatically shut off after 60 minutes of inactivity.
- Preheating will stop if any operation is performed or the device is charged.

Charging Instructions

① During Charging:

The digital display and PUFF icon lights on, while the battery icon flashes.



② Charging Complete:

The display screen turns off once charging is complete. When the power cable is removed, the screen flashes 3 times.

WARNING

1. Insufficient battery level or voltage may lead to suboptimal performance. Please recharge the device promptly.
2. Use the original charging cable. Avoid fast chargers or adapters over 5 Volts/2 Amps.
3. Don't leave the device unattended while charging. Do not use the device while charging.
4. Keep the device at close to room temperature. Avoid extreme heat or cold (extreme heat may cause explosions). Store away from direct sunlight for long periods.
5. Do not use if the device is damaged, wet, or has been dropped. Do not disassemble or modify it.