

# Specifications

Product Type: Cannabis All-In-One

Dimension: 90.0\*18.0\*18.0mm

Tank Capacity: 0.5mL / 1.0mL

Battery Capacity: 300mAh

Tank Material: PCTG

Heating Element: Ceramic Coil

Central Post: Postless

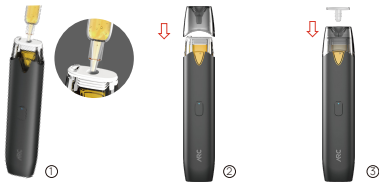
Voltage: Variable Voltage

Charging Port: Type-C

Preheating Time: 5 Seconds

Draw Mode: Autodraw (unlock button first)

# Filling Instructions



- ① Fill the oil into the central filling hole (make sure the oil does not exceed the chamber's capacity).
- ② Attach the mouthpiece to the oil chamber from the top down.
- ③ Secure the silicone plug on the mouthpiece.

## Note:

- Do not fill oil into the two side airpaths.
- Use an injection needle with a diameter no greater than 2.5MM.
- Clean any oil drips immediately to prevent mess.
- Attach the mouthpiece within 30 seconds or as quickly as possible after filling to avoid leaking or clogging.
- Ensure the mouthpiece is securely attached with no visible gaps.



# ARC User Manual

## Function Instructions



Power On/Off: Clickx5

Preheat: Clickx2

Voltage Adjustment: Clickx3



Green = Low



Blue = Medium



Red = High

1. Power On/Off: Click the button 5 times rapidly to turn on/off.
2. Preheat Mode: Double-click (2x) to start a 5-second preheat.  
The light will flash during heating.
3. Voltage Adjustment: Triple-click (3x) to switch power levels  
(Green = Low, Blue = Medium, Red = High).

### Notes:

- The device will automatically shut off after 60 minutes of inactivity.
- Preheating stops with any operation or during charging.

## Charging Instructions

### ① During Charging:

The red light stays on to indicate charging.



### ② Charging Complete:

The light turns off once charging is complete. When the power cable is removed, the light flashes 3 times.

## WARNING

1. Insufficient battery level or voltage may lead to suboptimal performance. Please recharge the device promptly.
2. Use the original charging cable. Avoid fast chargers or adapters over 5 Volts/2 Amps.
3. Don't leave the device unattended while charging. Do not use the device while charging.
4. Keep the device at close to room temperature. Avoid extreme heat or cold (extreme heat may cause explosions). Store away from direct sunlight for long periods.
5. Do not use if the device is damaged, wet, or has been dropped. Do not disassemble or modify it.